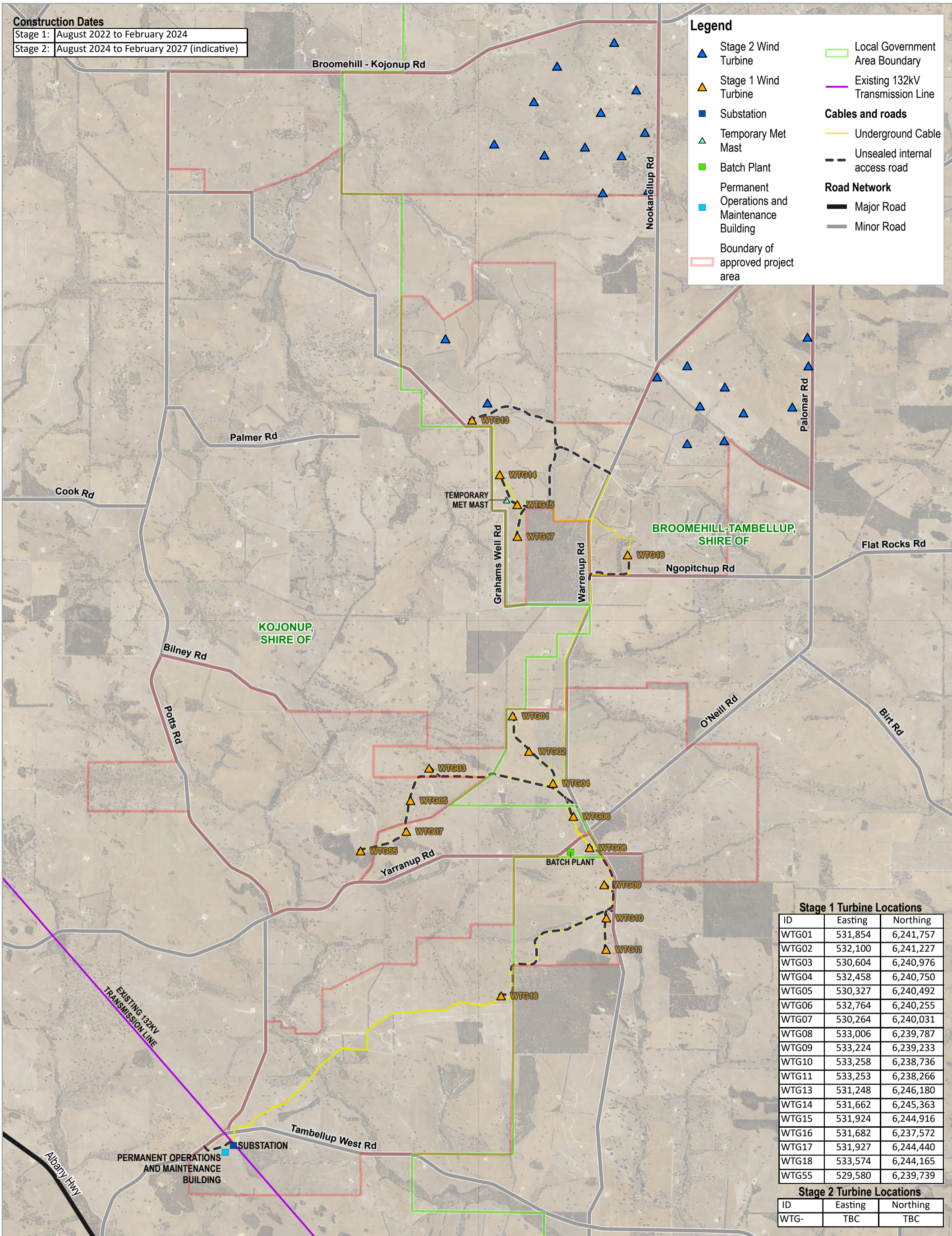


**Construction Dates**

Stage 1:	August 2022 to February 2024
Stage 2:	August 2024 to February 2027 (indicative)

**Legend**

- ▲ Stage 2 Wind Turbine
- ▲ Stage 1 Wind Turbine
- Substation
- ▲ Temporary Met Mast
- Batch Plant
- Permanent Operations and Maintenance Building
- Boundary of approved project area
- Local Government Area Boundary
- Existing 132kV Transmission Line
- Cables and roads**
- Underground Cable
- Unsealed internal access road
- Road Network**
- Major Road
- Minor Road



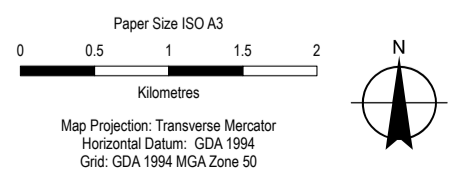
**Stage 1 Turbine Locations**

ID	Easting	Northing
WTG01	531,854	6,241,757
WTG02	532,100	6,241,227
WTG03	530,604	6,240,976
WTG04	532,458	6,240,750
WTG05	530,327	6,240,492
WTG06	532,764	6,240,255
WTG07	530,264	6,240,031
WTG08	533,006	6,239,787
WTG09	533,224	6,239,233
WTG10	533,258	6,238,736
WTG11	533,253	6,238,266
WTG13	531,248	6,246,180
WTG14	531,662	6,245,363
WTG15	531,924	6,244,916
WTG16	531,682	6,237,572
WTG17	531,927	6,244,440
WTG18	533,574	6,244,165
WTG55	529,580	6,239,739

**Stage 2 Turbine Locations**

ID	Easting	Northing
WTG-	TBC	TBC

REV	BY	DATE	DESCRIPTION	CKD	APP
A	AK	08.07.2022	ISSUED FOR CLIENT REVIEW	SH	RS
B	AK	14.07.2022	REISSUED FOR USE	MM	RS



ENEL  
Flat Rocks Wind Farm Stage One  
12574907-0000-MD-LAD-003  
Staging Plan

Project No. 12574907  
Revision No. B  
Date 14/07/2022